

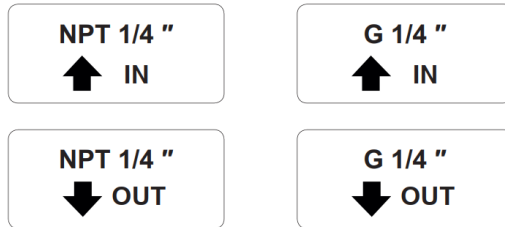
Monitoring Stations – Improvements of V200 nano::station & micro::station – Clean Water

- Water inlet standardized with fixed parts
 - Identical for all clean water stations
 - Inlet valve, strainer and optional pressor sensor
 - Inlet on left side and outlet on right side
- Tube clamps to fix the tubes onto the panel
 - More robust installation
 - Avoid of damage during transport
- New push-pull fittings with O-ring sealing
 - More easy handling
 - Avoid of leakage due to bad thread sealing
- Additional G 1/4" connection of customized add-ons (e.g. sampling outlet or station cleaning)
- Flow restrictor will be standard equipment to ensure stable flow conditions

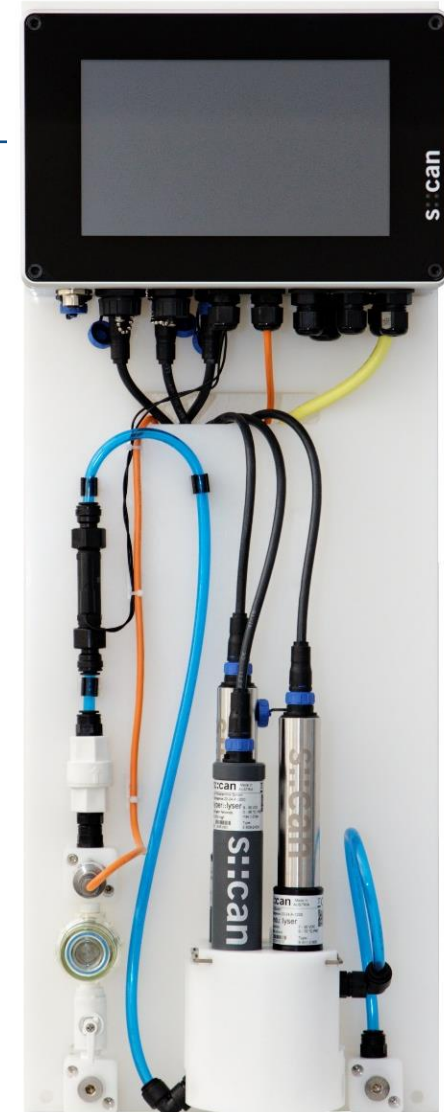
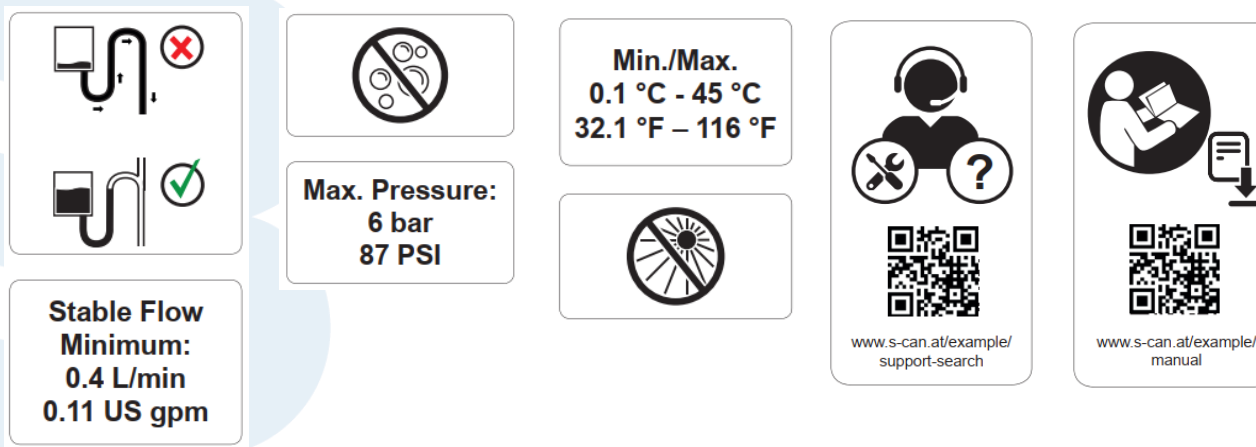


Monitoring Stations – Improvements of V200 nano::station & micro::station – Clean Water

- Clean backside of panel (no screwheads)
- Labels highlighting the IN and OUT connections



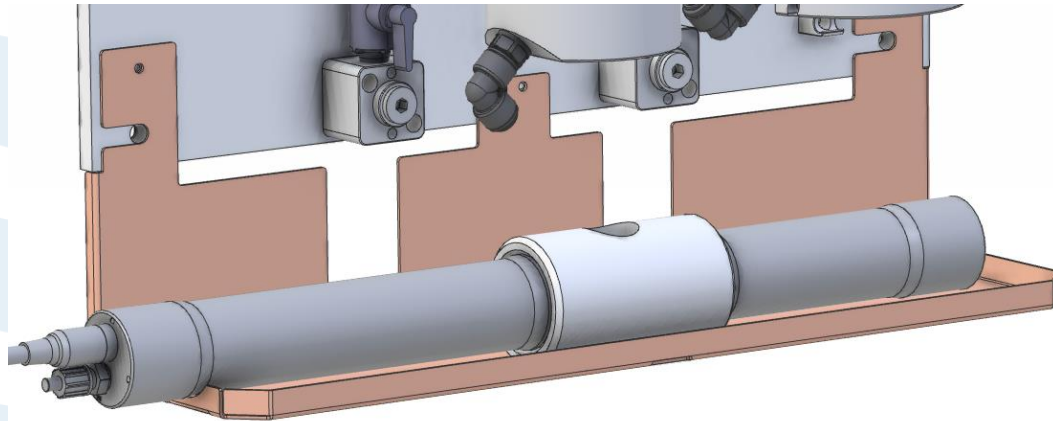
- Labels supporting proper operation & installation



Monitoring Stations – Improvements of V200

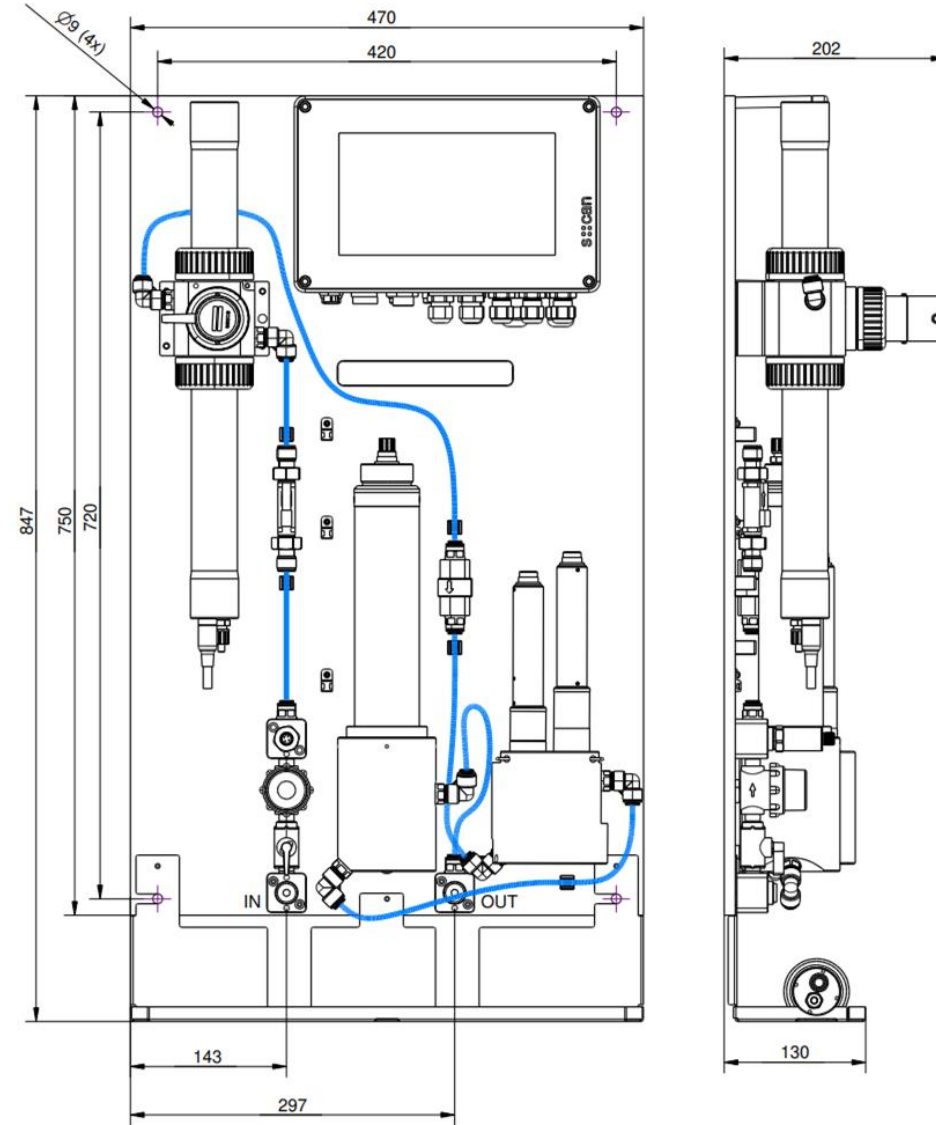
micro::station – Clean Water

- Extended width of panel from 450 → 470 mm
 - Avoid damage of protruding parts
- Additional tray
 - Easier handling during maintenance (e.g. function check, cleaning)
 - Sensor calibration directly on the panel



micro::station clean

Dimensions



nano::station

Dimensions

