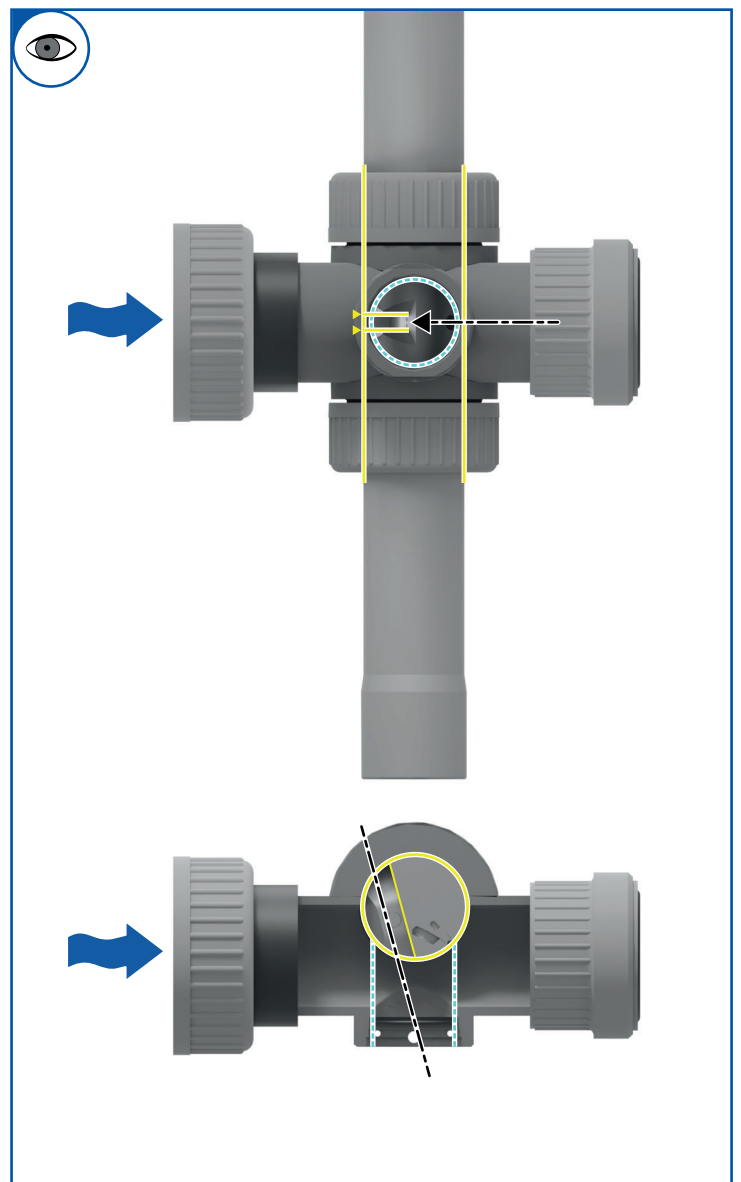
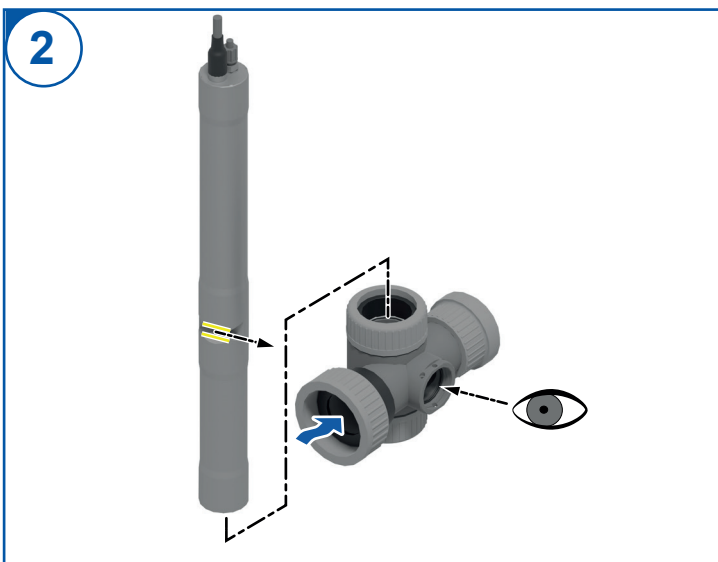
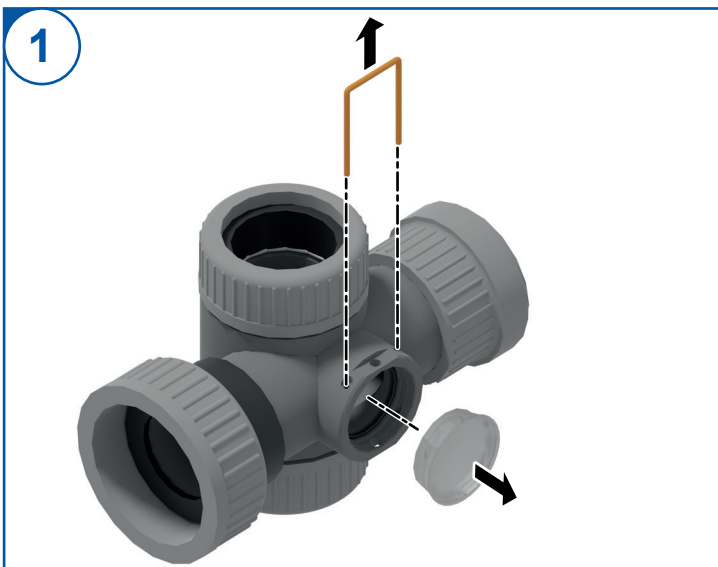
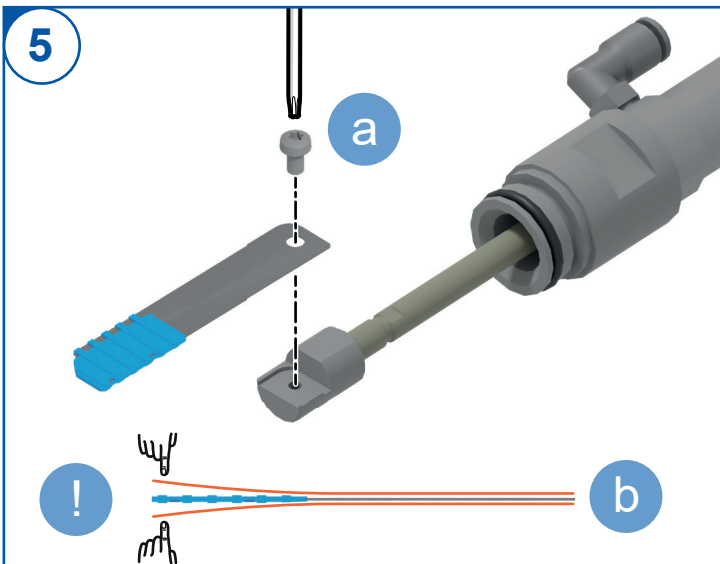
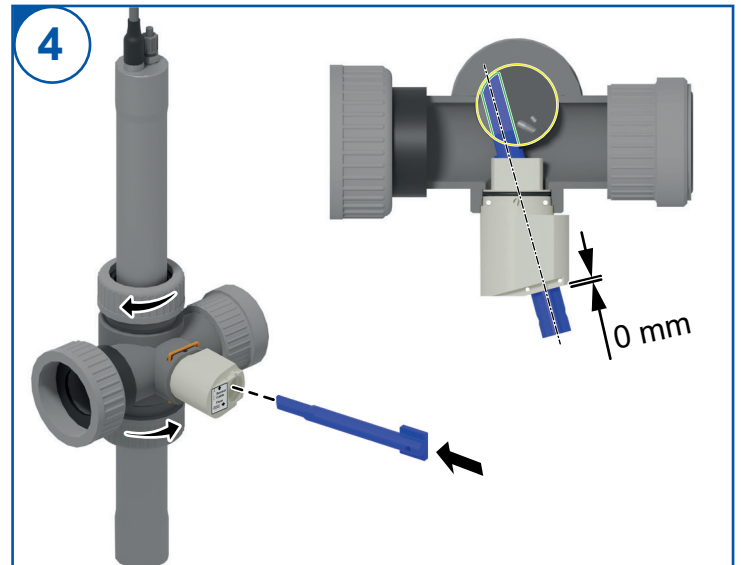
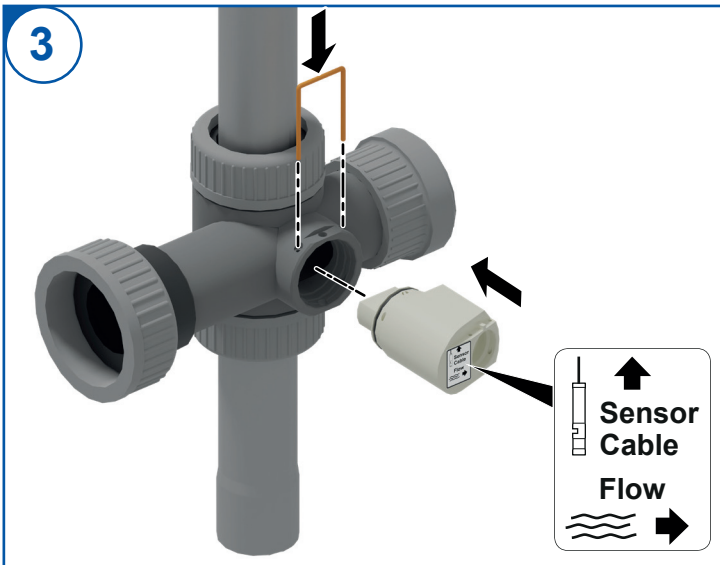


assembly guide::montageanleitung



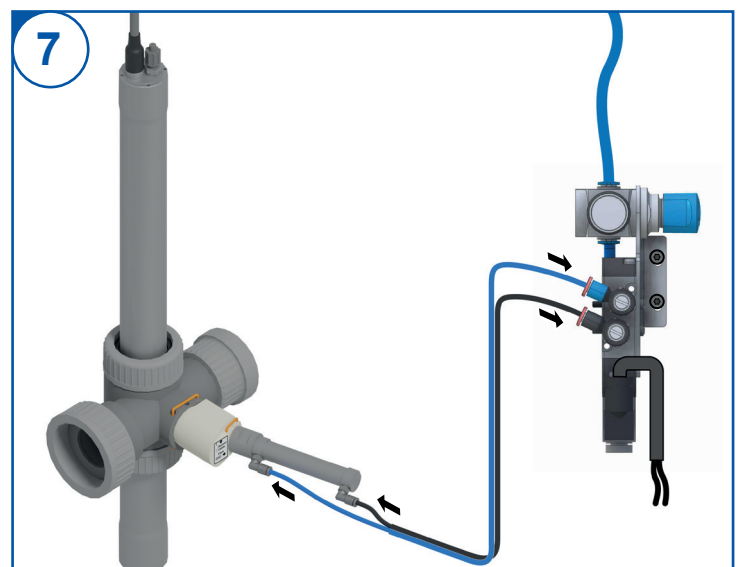
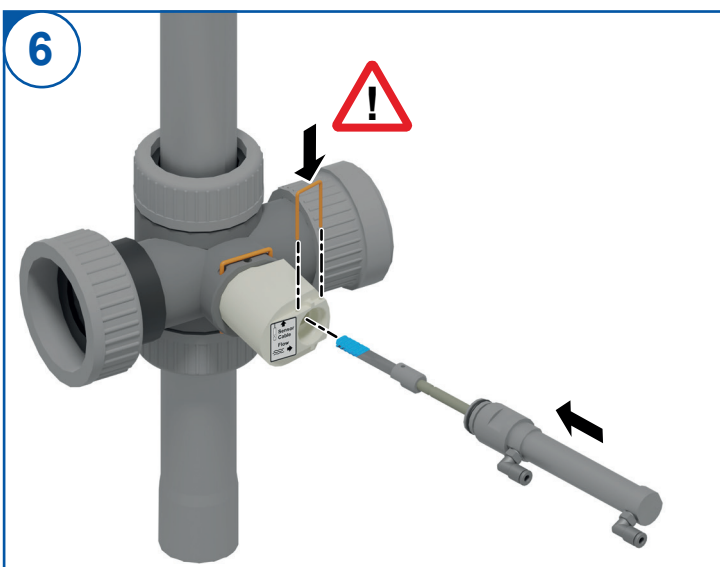


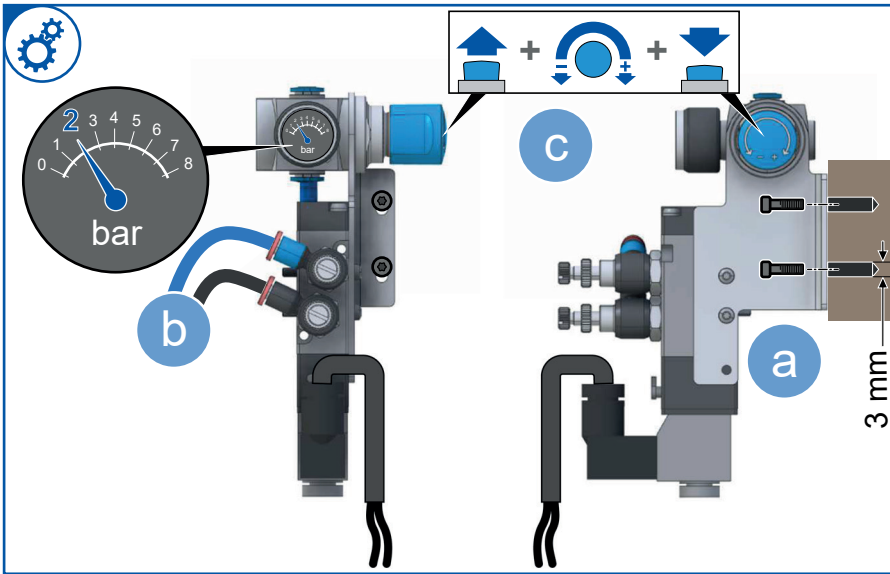
a Mount wiper blade on piston
Wischerblatt auf Kolben montieren

Check if the wiper is in line with the piston assembly.

b If not: Bend until it aligns well
Überprüfen ob Wischerblatt und Kolben eine Linie bilden
Wenn nicht: Wischerblatt zurecht biegen

! Handle with care
Vorsichtig vorgehen






- a** Mount on wall
An Wand befestigen
- b** Connect tubes
Druckschläuche verbinden
- c** Adjust pressure to approx. 2 bar
Druck auf ca. 2 bar einstellen

con::cube

1	3	5	7	9	11
COM5, RS485		Valve1	Valve2	WkUp	12V Out
B -	GND	M -	M -	-	-

2	4	6	8	10	12
COM5, RS485		Valve1	Valve2	WkUp	12V Out
A+	X	M+	M+	+	+

auto::blade




Power supply Versorgungsspannung	12 V DC
Power consumption Leistungsaufnahme	2.8 W
Compressed air limits" Druckluftgrenzwerte	1...8 bar
Operating temperature Betriebstemperatur	0...45 °C
Cleaning interval Reinigungsintervall	1200 sec
Cleaning duration Reinigungsdauer	3 sec
Waiting time Wartezeit	5 sec

con::lyte

Sensor				4-20 Out				
5	7	9	11	13	15	17	19	21
□	□	□	□	□	□	□	□	□
□	□	□	□	□	□	□	□	□

11 ... GND
10 ... Valve +


auto::blade

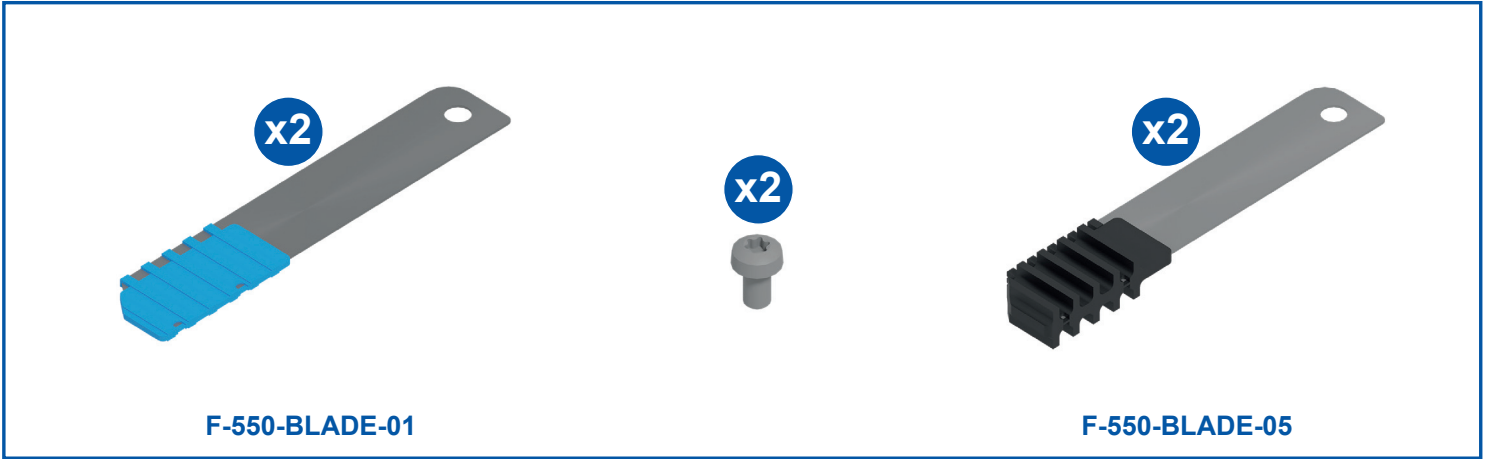


con::nect

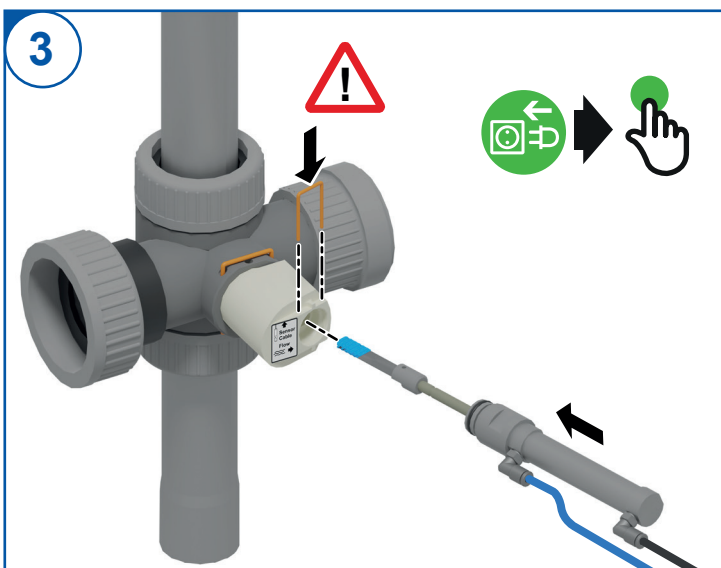
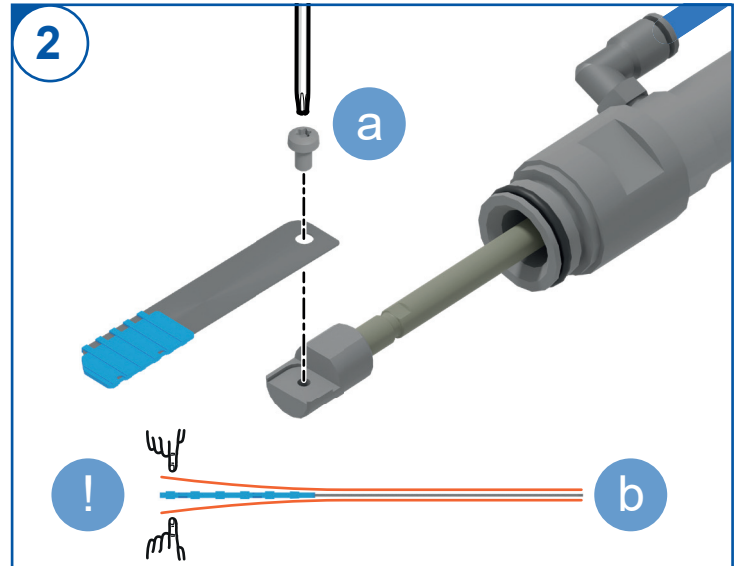
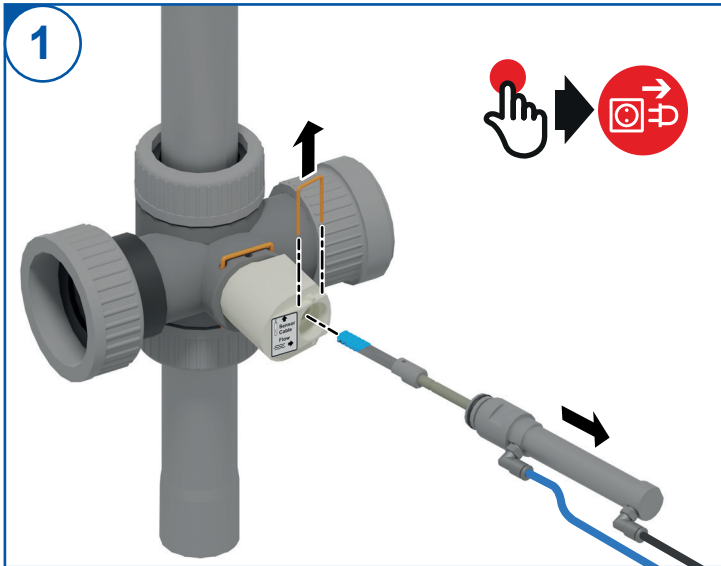
□	□	□	□	□	□
□	□	□	□	□	□
-	NC	M-	NC	-	-
+	NC	M+	Trg	+	+
DA		Val	Bru	12V	DC
TA		ve	sh	out	in

auto::blade





change::tauschen



a Mount wiper blade on piston
Wischerblatt auf Kolben montieren

Check if the wiper is in line with the piston assembly.

b If not: Bend until it aligns well
Überprüfen ob Wischerblatt und Kolben eine Linie bilden
Wenn nicht: Wischerblatt zurecht biegen

! Handle with care
Vorsichtig vorgehen